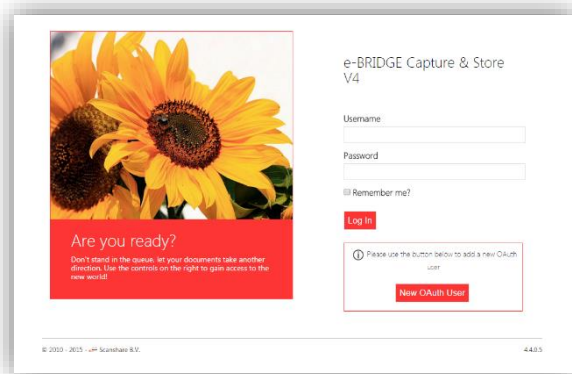
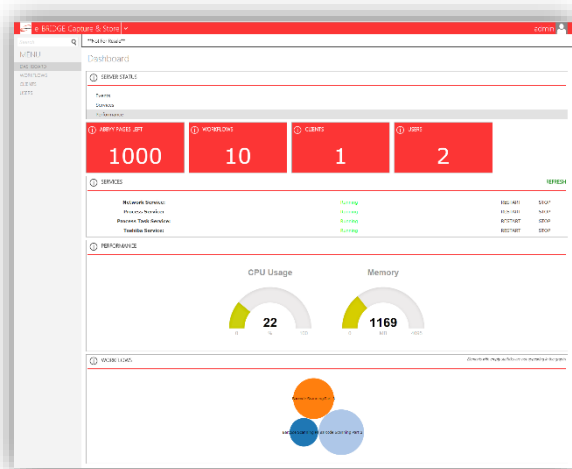


Capture & Store Enterprise V4 is a powerful document processing solution, enabling you to improve office efficiency and productivity in your day-to-day business and administration. The user interface has been totally renewed and web-based and makes this application much easier to configure in relation to the former version:



Current login and layout with Microsoft basic visuals.

The new web-based user interface gives you a clear overview of your server status. Showing you the amount of workflows, users and connected devices and the performance in a blink of an eye. The menu gives you the possibility to easily browse to the desired location.

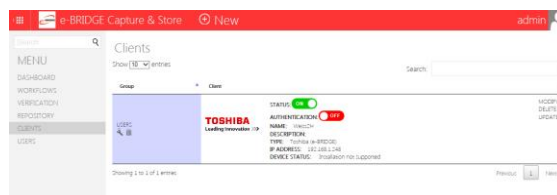


Dashboard with a clear overview

Capture & Store scanning software is based on the capture, process and store principle:

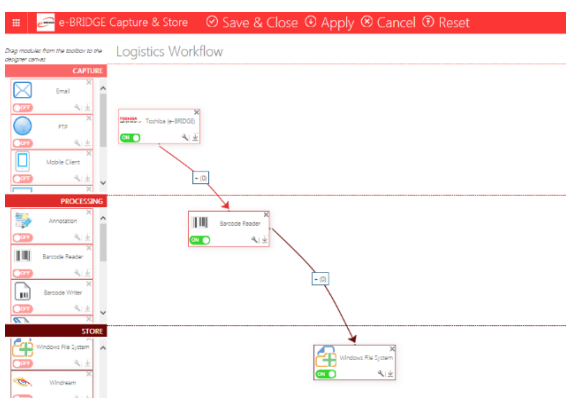
Capture your document by choosing one of the following options:

- Your MFP (compatible with multiple brands): embedded, intuitive, touch user interface
- Watch folder: receive documents from any scan device or existing electronic files
- FTP: receive documents via the FTP protocol, suited for transferring large files over long distances
- Desktop client: connect to any TWAIN-enabled scan device or import existing scanned documents (TIFF, PDF etc.)
- Desktop client Pro: same as Desktop client, extended with the possibility to use zone OCR to retrieve metadata from the Desktop client
- Printer Client: gives the user the possibility to scan documents from any application by printing the desired document to the Scanshare Enterprise virtual printer driver.
- E-Mail: receive scanned documents as attachments to an email address – use the text in the email (body, subject, etc.) as metadata



Client menu showing the current device status

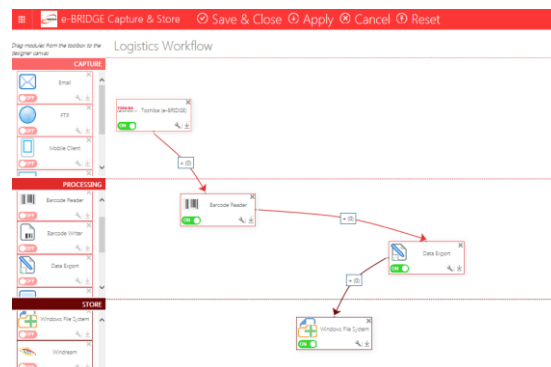
Process your document by using one of the many available processing options such as free form recognition where the software automatically can recognize the type of document that is being processed and automatically selects the correct workflow without user intervention. Or recognize and utilize magnetic ink font written on bank cheques by magnetic ink recognition. The possibilities are almost limitless with Document Navigator V4. There is zonal OCR, recognition of handwriting, deskew, despeckle, hole punch removal, empty page removal, adding of notes, annotations or stamps, and even optimal marks recognition (marking of boxes, for example of exam papers) and barcode recognition and writing (1D and 2D barcodes)



The clean user interface makes it really easy to configure workflows quickly



Store your documents in the most appropriate format to one of the many available connectors, such as Windows file system, Sharepoint, email, Google Drive, Mediafire, Dropbox, ODBC-Compliant data sources, Script connector and multiple DMS, ERP CMS and records systems.



By simply dragging and dropping capture, process and store functionalities, a workflow is easily created.

Toshiba TEC Singapore Pte Ltd

2 Ang Mo Kio Street 62
Singapore 569138
Tel: (65) 6481 9488
Fax: (65) 6481 2385

Distributed by:

